

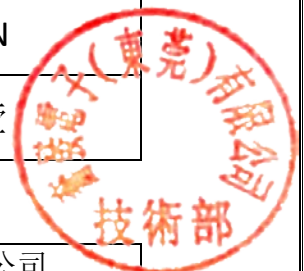


# SPECIFICATION FOR APPROVAL

CUSTOMER	
CUSTOMER P/N	
DESCRIPTION/SPEC	SFRH74T Series
EDITION	A
DATE	2024-12-17

CUSTOMER APPROVAL		
APPROVED	CHECKED	DESIGN

FENFA APPROVAL		
APPROVED	CHECKED	DESIGN
马德邦	石启明	马雪莹



奮發電子有限公司	奮發電子（東莞）有限公司 FENFA ELECTRONICS (DONGGUAN) CO., LTD
FENFA ELECTRONICS LTD.	东莞市中禹智能科技有限公司 ZHONGYU INTELLIGENT TECHNOLOGY (DONGGUAN) CO., LTD.
Flat Q, 3/F, Phase 1, Kwun Tong Ind. Centre, 460 Kwun Tong Road, Kowloon, Hong Kong	3/F, No.5 Hui Cheng Science Park, Xia Keng No.3 Industrial Road, Chang Ping Town, Dongguan, Guangdong Province, China
Tel: (852) 2372 0880, Fax: (852) 2372 0131	Tel: (86) 769-86291668 ext - 621
Website: www.coilsfenfa.com	
E-mail: sales@coilsfenfa.com	



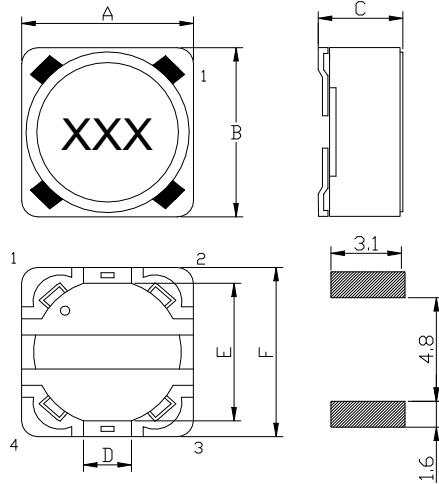


# SPECIFICATION FOR APPROVAL

## SFRH74T Series

<b>Rev.No.</b>	<b>A</b>
<b>Page</b>	<b>1</b>

### I .CONFIGURATION&DIMENSIONS:

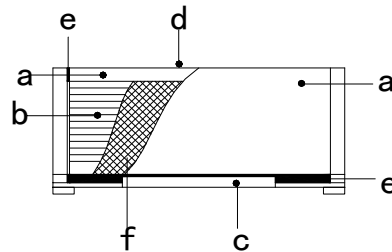


A:7.3±0.2 mm
B:7.3±0.2 mm
C:4.5max mm
D:1.8typ mm
E:4.5±0.2 mm
F:7.2±0.2 mm

Remark: XXX is inductance

### II .MATERIALS:

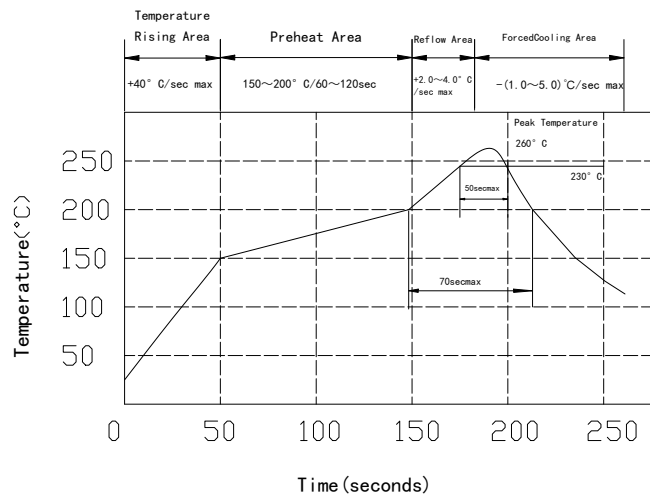
NO.	DESCRIPTION
a.	CORE
b.	WIRE
c.	BASE
d.	INKING
e.	EPOXY
f.	MYLAR TAPE



### III .GENERAL SPECIFICATION:

1. Tested at 100KHz,0.25Vrms,0 Adc.
2. DC current at which the inductance drops 30% from its value without current.
3. Average current for 40°C temperature rise from 25°C.
4. Electrical specifications at:25°C
5. Storage temp range:-40°C----+85°C
6. Operating temp range:-40°C----+125°C

PeakTemp:260°C max  
 Max time above230° C:50secmax  
 Max time above200° C:70secmax



# SPECIFICATION FOR APPROVAL

## SFRH74T Series

Rev.No.

A

Page

2

PART NO	Ls	DCR max	Isat max	TEST FREQ.
	(uH)	(mΩ)	(A)	(Hz)
<input type="checkbox"/> SFRH74T-1R0N-R-S-LF	1.0	15	9.00	100K/0.25V
<input type="checkbox"/> SFRH74T-1R5N-R-S-LF	1.5	18	7.00	100K/0.25V
<input type="checkbox"/> SFRH74T-2R2N-R-S-LF	2.2	28	6.00	100K/0.25V
<input type="checkbox"/> SFRH74T-3R3N-R-S-LF	3.3	32	4.80	100K/0.25V
<input type="checkbox"/> SFRH74T-3R9N-R-S-LF	3.9	35	4.40	100K/0.25V
<input type="checkbox"/> SFRH74T-4R7N-R-S-LF	4.7	38	4.00	100K/0.25V
<input type="checkbox"/> SFRH74T-5R6N-R-S-LF	5.6	40	3.50	100K/0.25V
<input type="checkbox"/> SFRH74T-6R8N-R-S-LF	6.8	45	3.00	100K/0.25V
<input type="checkbox"/> SFRH74T-100M-R-S-LF	10	49	1.84	100K/0.25V
<input type="checkbox"/> SFRH74T-120M-R-S-LF	12	58	1.71	100K/0.25V
<input type="checkbox"/> SFRH74T-150M-R-S-LF	15	81	1.47	100K/0.25V
<input type="checkbox"/> SFRH74T-180M-R-S-LF	18	91	1.31	100K/0.25V
<input type="checkbox"/> SFRH74T-220M-R-S-LF	22	110	1.23	100K/0.25V
<input type="checkbox"/> SFRH74T-270M-R-S-LF	27	150	1.12	100K/0.25V
<input type="checkbox"/> SFRH74T-330M-R-S-LF	33	170	0.96	100K/0.25V
<input type="checkbox"/> SFRH74T-390M-R-S-LF	39	230	0.91	100K/0.25V
<input type="checkbox"/> SFRH74T-470M-R-S-LF	47	260	0.88	100K/0.25V

# SPECIFICATION FOR APPROVAL

## SFRH74T Series

Rev.No.

A

Page

3

PART NO	Ls	DCR max	Isat max	TEST FREQ.
	(uH)	(mΩ)	(A)	(Hz)
<input type="checkbox"/> SFRH74T-560M-R-S-LF	56.0	350	0.75	100KHZ/0.25V
<input type="checkbox"/> SFRH74T-680M-R-S-LF	68	380	0.69	100KHZ/0.25V
<input type="checkbox"/> SFRH74T-820M-R-S-LF	82	430	0.61	100KHZ/0.25V
<input type="checkbox"/> SFRH74T-101M-R-S-LF	100	610	0.60	100KHZ/0.25V
<input type="checkbox"/> SFRH74T-121M-R-S-LF	120	660	0.52	100KHZ/0.25V
<input type="checkbox"/> SFRH74T-151M-R-S-LF	150	880	0.46	100KHZ/0.25V
<input type="checkbox"/> SFRH74T-181M-R-S-LF	180	980	0.42	100KHZ/0.25V
<input type="checkbox"/> SFRH74T-221M-R-S-LF	220	1170	0.36	100KHZ/0.25V
<input type="checkbox"/> SFRH74T-271M-R-S-LF	270	1640	0.34	100KHZ/0.25V
<input type="checkbox"/> SFRH74T-331M-R-S-LF	330	1860	0.32	100KHZ/0.25V
<input type="checkbox"/> SFRH74T-391M-R-S-LF	390	2850	0.29	100KHZ/0.25V
<input type="checkbox"/> SFRH74T-471M-R-S-LF	470	3010	0.26	100KHZ/0.25V
<input type="checkbox"/> SFRH74T-561M-R-S-LF	560	3620	0.23	100KHZ/0.25V
<input type="checkbox"/> SFRH74T-681M-R-S-LF	680	4630	0.22	100KHZ/0.25V
<input type="checkbox"/> SFRH74T-821M-R-S-LF	820	5200	0.20	100KHZ/0.25V
<input type="checkbox"/> SFRH74T-102M-R-S-LF	1000	6000	0.18	100KHZ/0.25V

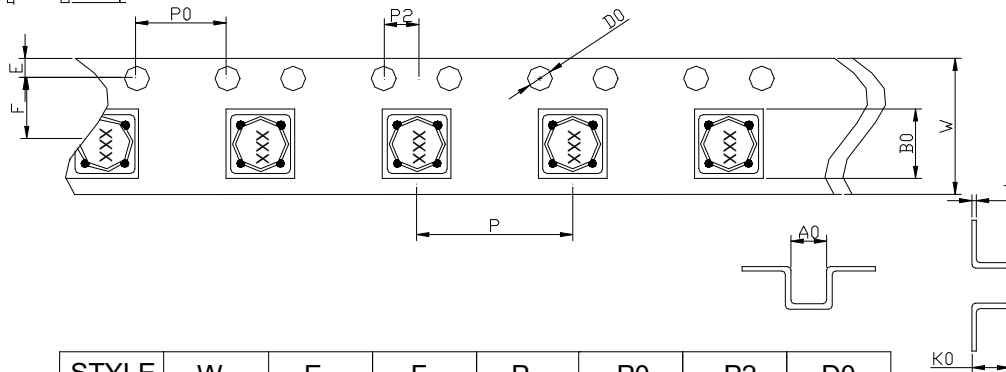
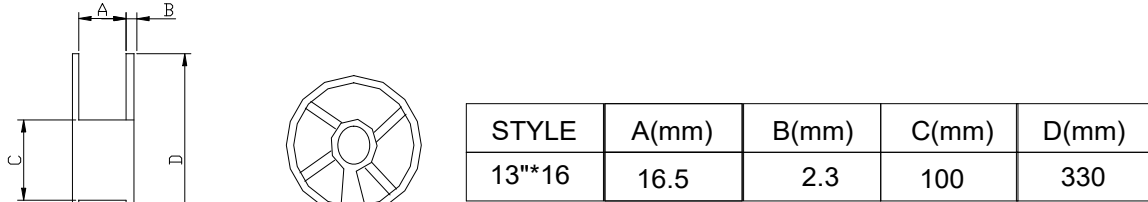
# SPECIFICATION FOR APPROVAL

## SFRH74T Series

Rev.No.	A
Page	4

**PACKAGE:**

9. Packaging Information  
9-1 Reel Dimension Tape Dimension

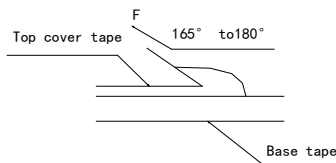


STYLE	W	E	F	P	P0	P2	D0
16mm	16.0±0.3	1.75±0.1	7.5±0.1	12.0±0.1	4.0±0.1	2.0±0.1	1.5±0.1
	T	A0	B0	K0			
	0.35±0.05	8.0±0.1	8.0±0.1	4.5±0.1			

9-2 Packaging Quantity

SERIES	1 REEL		INNER CARTON		MIDDLE CARTON			OUTER CARTON		
	Q TY(PCS)	REEL	Q TY(PCS)	SIZE(cm)	REEL	Q TY(PCS)	SIZE(cm)	REEL	Q TY(PCS)	SIZE(cm)
SFRH74T	1000	3	3000	345*340*70				6	6000	360*350*156

9-3 Tearing off Force



The force for tering off cover tape is 5 to 120 grams in the arrow direction under the following conditions

Room Temp (°C)	Room Humidity (%)	Room aim (hpa)	Room Speed mm/min
5-35	45-85	860-1060	300

Application Notice  
Storage Conditions

To maintain the solderability of terminal electrodes:

1. Temperature and humidity conditions: Less than 40°C and 70% RH.
2. Recommended products should be used within 6 months from the time of delivery.
3. The packaging material should be kept where no chlorine or sulfur exists in the air.

Transportation

1. Products should be handled with care to avoid damage or contamination from perspiration and skin oils.
2. The use of tweezers or vacuum pick ups is strongly recommended for individual components.
3. bulk handling should ensure that abrasion and mechanical shock are minimized.